

## 7<sup>TH</sup> LIMNA SYMPOSIUM

**Tuesday April 4, 2017**

**CHUV, César Roux Auditorium, BH 08  
 Rue du Bugnon 46, 1011 Lausanne**

Organizers: Prof. J. Auwerx, Prof. B. Deplancke, Prof. B. Desvergne, Prof. L. Fajas, Prof. F. Pralong, Prof. B. Thorens, Prof. K. Sakamoto, Prof. K. Schoonjans and Dr. L. Descamps.

Guest organizers: Isabelle Chareyron (NIHS), Caterina Collodet (NIHS), Mukul Girotra (Unil), Mary Gonzalez Melo (CHUV), Elena Katsyuba (EPFL), Darko Maric (Unil), Laia Martinez Carreres (Unil), Omid Mashinchian (NIHS), Erica Reggi (Unil), Tanja Sonntag (NIHS), Laura Steinbusch (Unil), Magda Zachara (EPFL).

### Speakers

**Prof. Etienne Meylan**, Swiss National Science Foundation Professor & Tenure-track Assistant Professor, School of Life Sciences, ISREC Institute, EPFL, Lausanne, Switzerland.

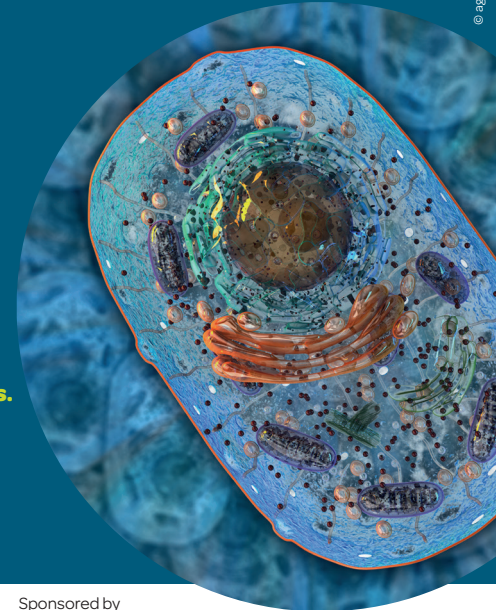
**Prof. Olaia Naveiras**, School of Life Sciences, Institute of Bioengineering, Laboratory of Regenerative Hematopoiesis, EPFL and Department of Medicine and Oncology (Hematology), Centre Hospitalier Universitaire Vaudois (CHUV), Lausanne, Switzerland.

**11 abstracts will be selected by the LIMNA direction committee for oral short talks.**

### Prizes:

- 2 prizes for the oral presentations.
- 2 poster prizes.

**More information on [www.limna.ch](http://www.limna.ch) or by contacting [laurence.descamps@unil.ch](mailto:laurence.descamps@unil.ch)**



## Tuesday April 4, 2017

**CHUV**, César Roux Auditorium, BH 08  
Rue du Bugnon 46, 1011 Lausanne

8h30-9h00 Welcome

### Opening

09h00 Welcome

### Morning Session

09h10 **Etienne Meylan**  
*"Glucose transporters in non-small cell lung cancer: regulation and function"*

09h45 **Selected talk 1**

10h05 **Selected talk 2**

10h25 Coffee Break

10h45 **Selected talk 3**

11h05 **Selected talk 4**

11h25 **Selected talk 5**

11h45 **Selected talk 6**

12h05 Lunch

### Afternoon Session

12h50 **Poster session**

14h30 **Olaia Naveiras**  
*"Title to be communicated"*

15h05 **Selected talk 7**

15h25 **Selected talk 8**

15h45 Coffee Break

16h05 **Selected talk 9**

16h25 **Selected talk 10**

16h45 **Selected talk 11**

17h05 **Concluding remarks and prizes distribution**